



4K Parking Lot Panoramic

Quick Guide



V1.01

BOM: 3101C0R8

Safety and Compliance Information

Installation and removal of the unit and its accessories must be carried out by qualified personnel. You must read all of the Safety Instructions supplied with your equipment before installation and operation.

Installation

- This device is a class A product and may cause radio interference. Take measures if necessary.
- Make sure the camera operates in an environment where the temperature and humidity meet requirements. Keep the camera from excessive pressure, vibration, moisture, dust, and intensive electromagnetic radiation.
- Use a power adapter that meets requirements. Otherwise, the device may be damaged.
- Make sure the length of the power cable between the power adapter and the camera is not too long, otherwise the voltage of the camera is lowered, causing the camera to work abnormally. If it is required to lengthen the power cable, lengthen the cable between the power adapter and the mains.
- Do not hold the tail cable by hand for weight bearing. Otherwise, the cable connector of the camera could be loosened.
- When connecting to an external interface, use an existing connection terminal, and ensure that the cable terminal (latch or clamp) is in good condition and properly fastened. Ensure that the cable is not tense during mounting, with a proper margin reserved to avoid poor port contact or loosening caused by shock or shake.
- The connectors of the tail cable must not be exposed. The bar cavity, waterproof box, corrugated pipe and PVC pipe must be fully sealed to protect the connectors from water. The waterproof components for the RJ45 plug must be used properly to protect the network cable from water.
- During the process of transportation, special attention is required for the protection of the transparent dome cover to prevent friction, scratch and

contamination, etc. In order to keep the cover clean, do not remove the protective film on the cover during mounting. After mounting is finished, remove the film before the device is powered on.

- Contact professionals for maintenance information. Do not attempt to dismantle the device by yourself. We shall not assume any responsibility for problems caused by unauthorized repair or maintenance.

Maintenance

- Caution: There will be risk of explosion if battery is replaced by an incorrect type. Dispose of used batteries according to the instructions.
- If there is dust on the front glass surface, remove the dust gently using an oil-free brush or a rubber dust blowing ball.
- If there is grease or a dust stain on the front glass surface, clean the glass surface gently from the center outward using lens cleaning cloth. If the grease or the stain still cannot be removed, use lens cleaning cloth dipped with detergent and clean the glass surface gently until it is removed.
- Do not use organic solvents, such as benzene or ethanol when cleaning the transparent dome cover.
- Make sure the lens cleaning cloth is clean itself.



- Never look at the transmit laser while the power is on. Never look directly at the fiber ports and the fiber cable ends when they are powered on.
- Use of controls or adjustments to the performance or procedures other than those specified herein may result in hazardous laser emissions.

Regulatory Compliance

FCC statements

This device complies with Part 15 of the FCC Rules. Operation is subject to the following two conditions: (1) this device may not

cause harmful interference, and (2) this device must accept any interference received, including interference that may cause undesired operation.

Caution: The user is cautioned that changes or modifications not expressly approved by the party responsible for compliance could void the user's authority to operate the equipment.

Note: This equipment has been tested and found to comply with the limits for a Class A digital device, pursuant to part 15 of the FCC Rules. These limits are designed to provide reasonable protection against harmful interference when the equipment is operated in a commercial environment. This equipment generates, uses, and can radiate radio frequency energy and, if not installed and used in accordance with the instruction manual, may cause harmful interference to radio communications. Operation of this equipment in a residential area is likely to cause harmful interference in which case the user will be required to correct the interference at his own expense.

LVD/EMC Directive



This product complies with the European Low Voltage Directive 2014/35/EU and EMC Directive 2014/30/EU.

WEEE Directive-2012/19/EU



The product this manual refers to is covered by the Waste Electrical & Electronic Equipment (WEEE) Directive and must be disposed of in a responsible manner.

Battery Directive-2013/56/EC



Battery in the product complies with the European Battery Directive 2013/56/EC. For proper recycling, return the battery to your supplier or to a designated collection point.

Default IP, Username and Password

- Default IP address: 192.168.1.13
- Default username: **admin**
- Default password: 123456



The default password is used for your first login. To ensure account security, please change the password after your first login. You are recommended to set a strong password (no less than eight characters).

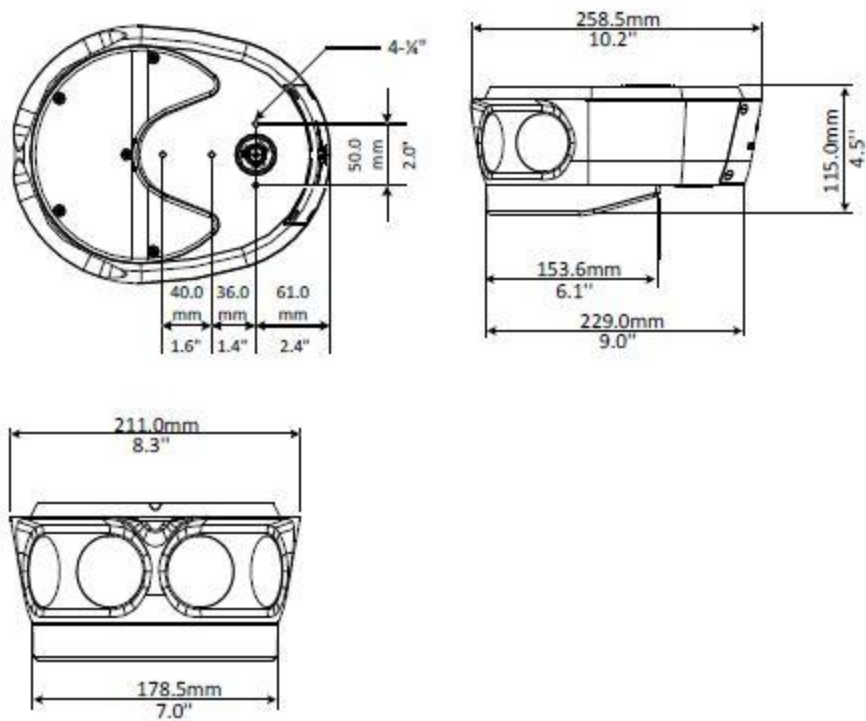
Packing List

Contact your local dealer if the package is damaged or incomplete. The attachments may vary with models, please see the actual model for details.

Item	Quantity
Camera	1
User document	1
Accessory pack	1

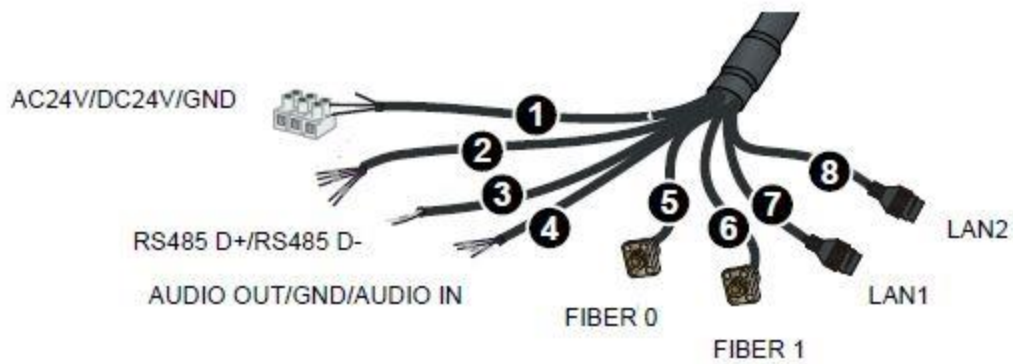
Appearance

Dimensions



Cable Connection

All cables are tagged to indicate their functions separately. You can connect cables by referring to the following figure. The appearance and tail cable may vary with device model.



1	Red: AC24V/DC24V+ Black: AC24V/DC24V- Yellow with green stripe: GND	2	Grey: ALM IN1 Black: GND Purple: ALM IN2 White with orange stripe: ALM OUT+ Orange: ALM OUT-
3	Yellow with black stripe: RS485 D+ Yellow: RS485 D-	4	Green: AUDIO OUT Brown: AUDIO IN White with brown stripe: GND
5	Fiber 0	6	Fiber 1
7	LAN 1	8	LAN 2



For specifications, see the latest product datasheet.

Mount Your Camera

Preparation

Requirements

- The use of this product must comply with recent safety regulations on electricity use and fire prevention in the region of use.
- Make sure that the attachments are complete, and that the installation environment and installation method meet the requirement.
- Please use this product according to installation instructions.

Cables and Tools

- Choose a proper network cable or optical fiber according to the bandwidth.
- Please prepare some mounting tools as required in advance, such as electric hammer, electric impact drill, wrench and screwdriver.

Product and Attachments

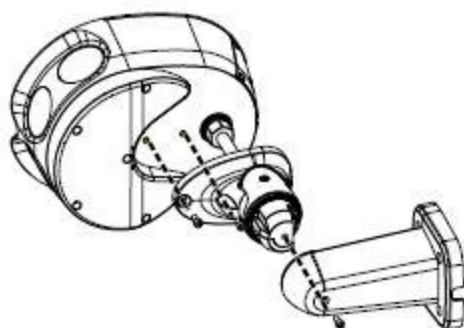
Make sure that the device in the package is in good condition and all the accessories are included.

Wall Mount

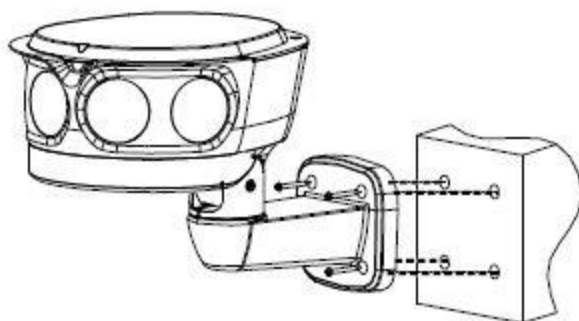
You may adopt wall mount, pendant mount or 2D bracket mount as needed. Prepare hardware accessories by yourself. The following part takes wall mount as an example. Make sure that the wall is capable of supporting the weight of the camera.

- (1) Lead the cable through the bracket, fix the camera to the camera holder with two socket head cap screws, then attach the camera holder to the bracket with a socket head cap

screws.



- (2) Fix the bracket to the wall using four provided nails and flat washers.

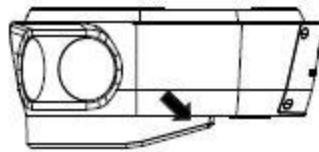



- (3) Install Micro SD card (optional). You need to insert the Micro SD card after opening the back cover of camera. Do not hot plug the Micro SD card after it is inserted. Otherwise the camera or the SD card might be damaged.

- Loosen the four lock screws at the back of the camera.
- Insert the Micro SD card, and re-install the back cover. Make sure that the sealing ring is installed in place.



(4) Remove the transparent film on the infrared panel.



	Note	<ul style="list-style-type: none"> • All the internal parts of the device has been assembled when delivered. Before you use the product, install Micro SD card first (not included in the package).
---	------	---

		<ul style="list-style-type: none"> The figures above are for reference only and may be different from the actual appearance of your device.
--	--	--

Activate Your Camera

Connect the LAN1 network cable of the camera to the switch, and then power on the camera. You can operate the camera after the device is successfully activated.

Access Your Camera

Before you begin, check that:

- Your camera is operating properly and connected to the network.
- The PC you are using is installed with Internet Explorer 8.0 or later.

Follow steps to access your camera through the Web interface:

1. Open your browser, input the IP address of your camera in the address bar and then press **Enter** to open the login page.
2. Enter the username and password and then click **Login**.



- Install the ActiveX at your first login. When the installation of the ActiveX is completed, open your IE to log in.
- For your first login with Windows 7, if the system does not prompt you to install ActiveX, follow these steps to turn off UAC: click the **Start** button, and then click **Control Panel**. In the search box, type **uac**, and then click **Change User Account Control Settings**. Move the slider

to the **Never Notify** position, and then click **OK**. After UAC is turned off, log in again.

- If the installation failed, open **Internet Option** in IE before login. Click the **Security** tab, click **Trusted sites**, and then click **Sites** to add the website. If you use Windows 7, you need to save the setup.exe to your PC first, and then right-click the file, select **Run as administrator**, and then install it according to instructions.