

# Panoramic-4K Quick Guide



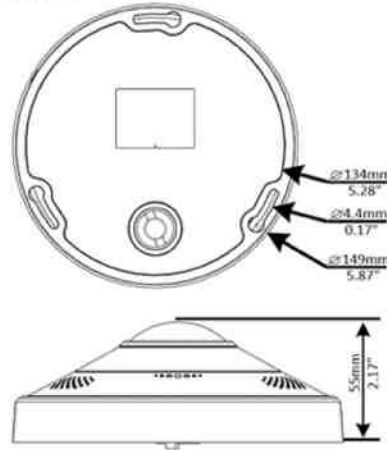
## Default IP, Username and Password

- Default IP address: 192.168.1.13 or 192.168.0.13 (vary with firmware version)
- Default username: admin
- Default password: 123456

The default password is used for your first login. To ensure account security, please change the password after your first login. You are recommended to set a strong password (no less than eight characters).

## Appearance

### Dimensions

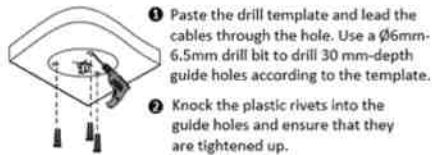


## Mount Your Camera

### Ceiling Mount

The following takes ceiling mount as an example. When mounting the camera on the wall or ceiling, ensure that the wall or ceiling can bear the weight of the camera. The hardware accessories should be purchased separately.

1. Locate the holes, drill holes on the ceiling, and then mount the plastic rivets of self-tapping screws.



2. Remove the housing.

Press the lock button and remove the housing as shown in the figure below.

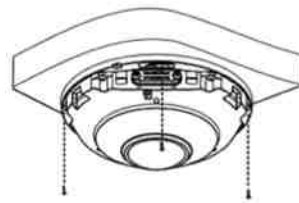


3. (Optional) Insert the Micro SD card.

Remove the cover, insert the Micro SD card and replace the cover.

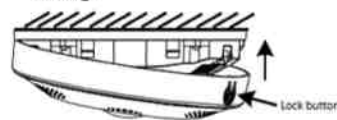


4. Connect all cables and fix the camera on the ceiling.

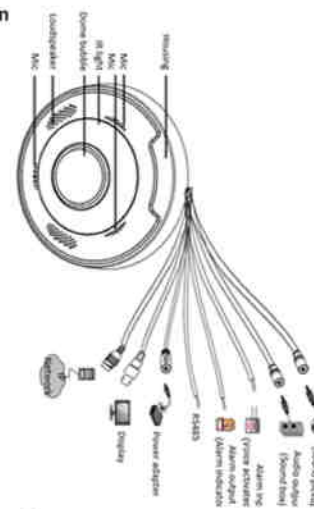


5. Replace the housing.

Align the lock button to the loudspeaker and replace the housing.



## Cable Connection



## Access Your Camera

Before you begin, check that:

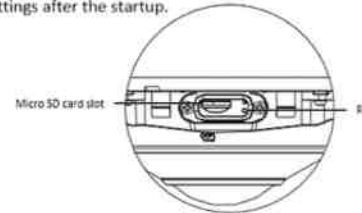
- Your camera is operating properly and connected to the network.
- The PC you are using is installed with Internet Explorer 7.0 or later.

Follow these steps to access your camera through the Web interface:

1. Open your browser, input the IP address of your camera in the address bar and then press **Enter** to open the login page.
2. Enter the username and password and then click **Login**.

## Reset Camera to Default Settings

Remove the Micro SD card cover first. For the detailed steps, see step 3. Use a toothpick or clip to press and hold the RST button (as shown in the figure below) for about 15 seconds till the Web indicates that the camera is restarting. The RST button only works within ten minutes after the camera is powered on. Then the camera is restored to the default settings after the startup.



## Packing List

- Dome w/ Pigtail for IP and secondary 12V DC power input
- Extra waterproof connector
- Adhesive template
- Hardware Baggy - 3 screws and drywall anchors
- Quick Guide
- Coax Seal

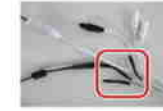
## Waterproof Components for an RJ45 Plug



Attach the seal ring to the Ethernet interface. Mount the waterproof components in order. Then insert the cable into the Ethernet interface and screw the waterproof bolt in.

## Waterproof Tail Cable

Connect the tail cables and then take the following steps to protect the tail cables from water using waterproof tapes. The figures are for your reference only.



1. Connect the tail cables, and protect the cables and cable connections using insulating tapes. Then wrap all the tail cables together using insulating tapes.



2. Choose a start point for waterproof tapes and protect the tail cables using waterproof tapes.

You can crimp the inner wires of the cable with the RJ45 plug first and then cover the waterproof components first.

## Coax Seal Recommended

Part # - EC-IRPD12-18  
3 year warranty

**ENVIRO**  
cams

866-264-0041

sales@envirocams.com

201 N. Elm St.  
Kemp, TX 75143

*Not Your Father's IP Cameras*