

OCCULUS-4K Quick Guide



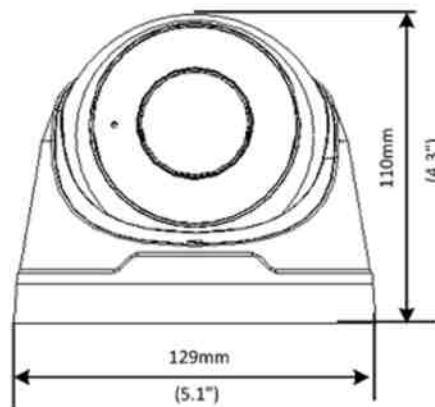
Default IP, Username and Password

- Default IP address: 192.168.1.13 or 192.168.0.13 (vary with firmware version)
- Default username: admin
- Default password: 123456

The default password is used for your first login. To ensure account security, please change the password after your first login. You are recommended to set a strong password (no less than eight characters).

Appearance

Dimensions



Mount Your Camera

Ceiling Mount

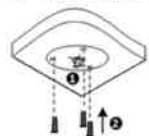
You can adopt ceiling mount or wall mount and purchase hardware accessories by yourself. The following part takes ceiling mount as an example. Wall mount is similar to ceiling mount and therefore is omitted here.

1. Attach the sticker to ceiling, and then drill 30-mm deep guide holes using a drill bit (6mm or 6.5mm in diameter) according to the sticker.

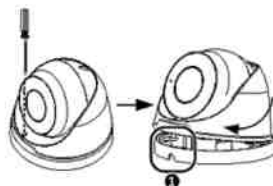


2. Insert the plastic anchors.

- a. Drill a hole to lead cables out of the ceiling.
- b. Knock in plugs.

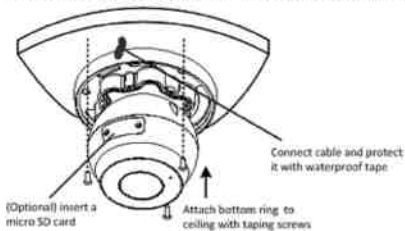


3. Loosen the fixing screw, then remove the housing.

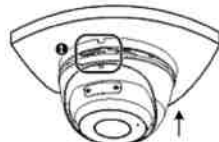


Loosen the fixing screw, then turn the housing to the position shown in figure 1 to remove it.

4. Connect the cable and then secure the bottom ring.

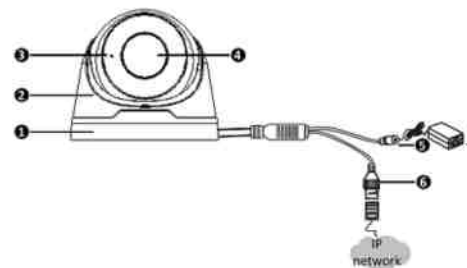


5. Mount the housing.



Adjust the housing to the position shown in figure 1 then push and turn it to anywhere but 1.

Cable Connection



No.	Description	No.	Description
1	Bottom ring	2	Housing
3	Mic	4	Lens
5	Power interface (12 VDC)	6	Ethernet interface

Access Your Camera

Before you begin, check that:

- Your camera is operating properly and connected to the network.
- The PC you are using is installed with Internet Explorer 7.0 or later.

Follow these steps to access your camera through the Web interface:

1. Open your browser, input the IP address of your camera in the address bar and then press **Enter** to open the login page.
2. Enter the username and password and then click **Login**.

6. Adjust the monitoring direction.



Adjust the monitoring direction, then tighten the screw.

Packing List

- Dome w/ Pigtail for IP and secondary 12V DC power input
- Extra waterproof connector
- Adhesive template
- Hardware Baggy - 3 screws and drywall anchors
- Quick Guide
- Coax Seal

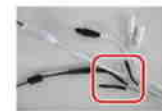
Waterproof Components for an RJ45 Plug



Attach the seal ring to the Ethernet interface. Mount the waterproof components in order. Then insert the cable into the Ethernet interface and screw the waterproof bolt in.

Waterproof Tail Cable

Connect the tail cables and then take the following steps to protect the tail cables from water using waterproof tapes. The figures are for your reference only.



1. Connect the tail cables, and protect the cables and cable connections using insulating tapes. Then wrap all the tail cables together using insulating tapes.



2. Choose a start point for waterproof tapes and protect the tail cables using waterproof tapes.

You can crimp the inner wires of the cable with the RJ45 plug first and then cover the waterproof components. You may also cover the waterproof components first.

Coax Seal Recommended

Part # - EC-IRD4-2712M-4K
3 year warranty

ENVIRO
cams

866-264-0041

sales@envirocams.com

201 N. Elm St.
Kemp, TX 75143

Not Your Father's IP Cameras